

AVENTICS 

MAREX ECS
DESIGNED TO
KEEP THE COURSE



Rexroth
Pneumatics





Design by AVENTICS – pairing form with function

Excellent design supports operation in all situations. The straightforward, timeless style of the Marex ECS goes well with any ship design. Unmistakable keypad icons ensure intuitive operation.

- Exclusive chrome surfaces, contrasted with black
- Language-independent icons
- Subtle backlight illumination
- Dynamic, asymmetric levers



Marex ECS

The Easy Control System

Easy to operate with a unique design and extensive options: the Marex ECS meets the highest production and quality standards and provides captains with maximum reliability, as proven by endurance testing with one million lever actuations. The Marex ECS controls single or twin gasoline and diesel engine applications from up to four control stations. Trolling gear control is available as an option. The system is designed for small

pleasure and work boats and is compatible with all common engine types and reversing gears. Its hardware originates from proven automotive applications. The well-established CAN bus technology ensures reliable communication between the components. Sophisticated auto-diagnostics inform the operator of the current operating state. An alarm log is provided for subsequent evaluation.



Design

- Timeless
- Easy to integrate
- With backlight illumination



User Experience

- Wi-Fi web server
- Auto-config
- Language-independent icons



Safety

- Proven BOSCH components
- ABYC-compliant
- Backup Hall sensor

Advantages

- ✓ Unique, timeless design
- ✓ Wi-Fi web server
- ✓ Proven BOSCH components

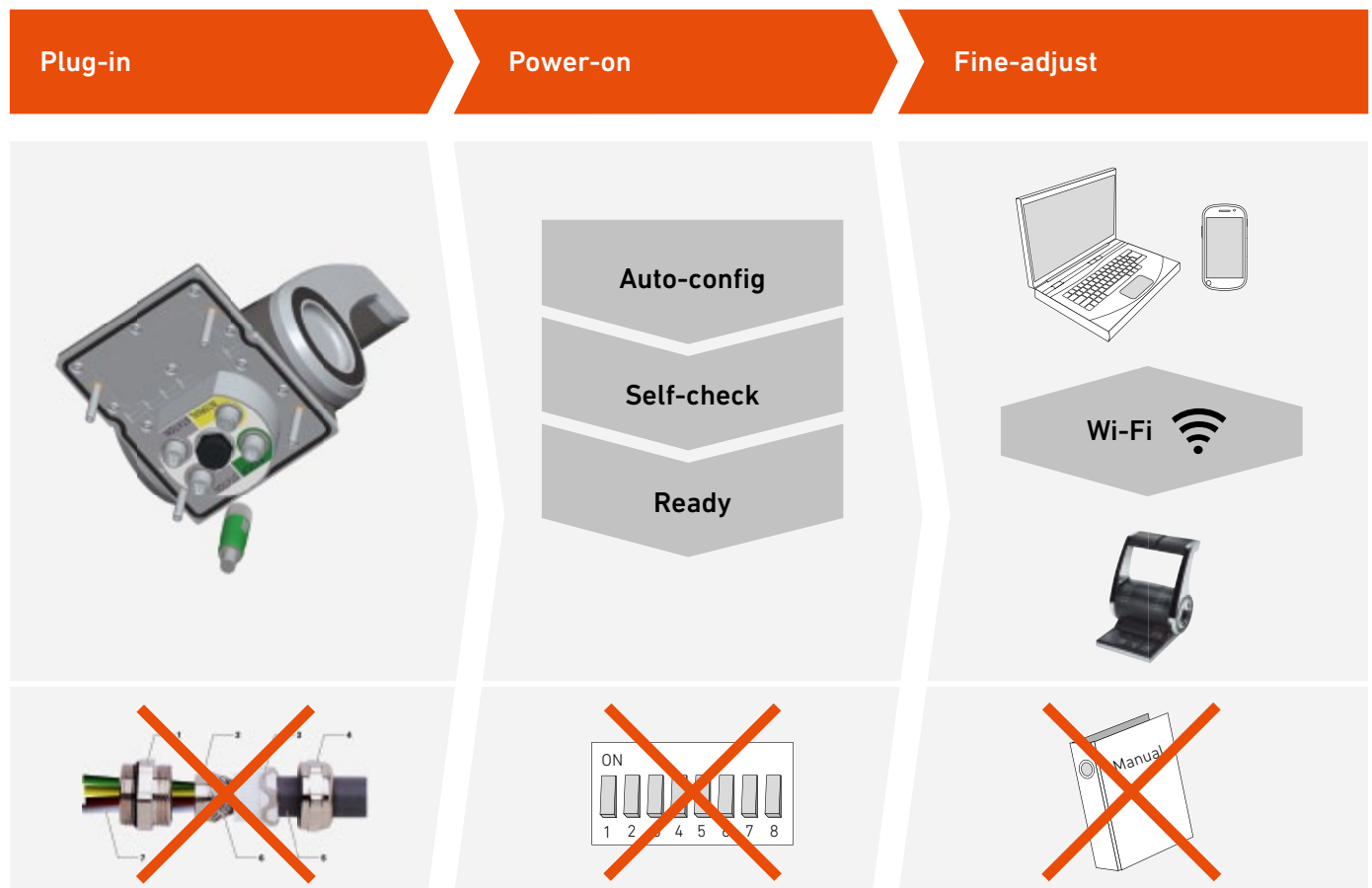


User-friendly - extensive experience combined with state-of-the-art technology

With the Marex ECS, AVENTICS is introducing one of the most innovative engine remote controls with integrated Wi-Fi to the market. Its sophisticated technology combines complex functionality with easy handling resulting in reduced installation and commissioning efforts and uncomplicated operation features. It can be adjusted wirelessly via Wi-Fi without additional software and hardware adapters, using the standard web browser on any smartphone, tablet, or laptop. The guiding browser interface ensures smooth commissioning.

- Market innovation: integrated Wi-Fi
- Web server access independent of hardware and operating system
- Auto-configuration
- Plug-in solution
- Ergonomic keypad design

Time-saving start-up





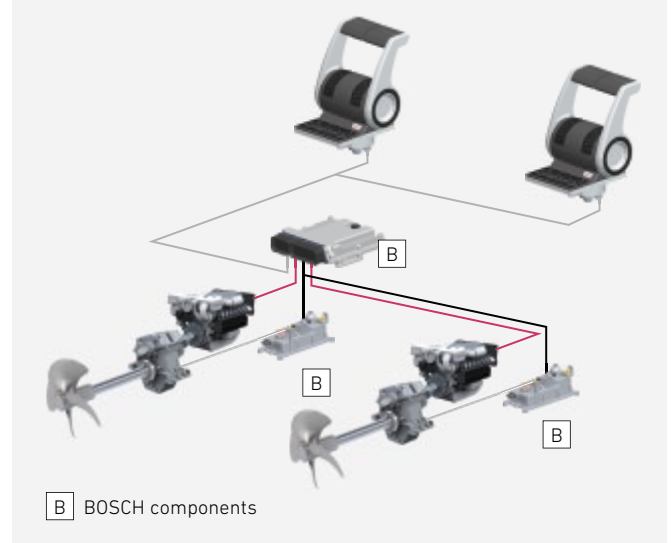
Reliable – in all waters, for every maneuver

Marex ECS basic

Reliability made in Germany. Even the basic version of the Marex ECS sets benchmarks with its dependable function and meets the highest BOSCH production and quality standards. All components were developed in accordance with ABYC specifications and feature optimized safety in terms of electromagnetic radiation and environmental compatibility.

- Proven BOSCH control unit
- Sophisticated BOSCH actuator
- ABYC-compliant
- Alarm log
- Manual operation of actuator
- Engine stall protection

ABYC-compliant



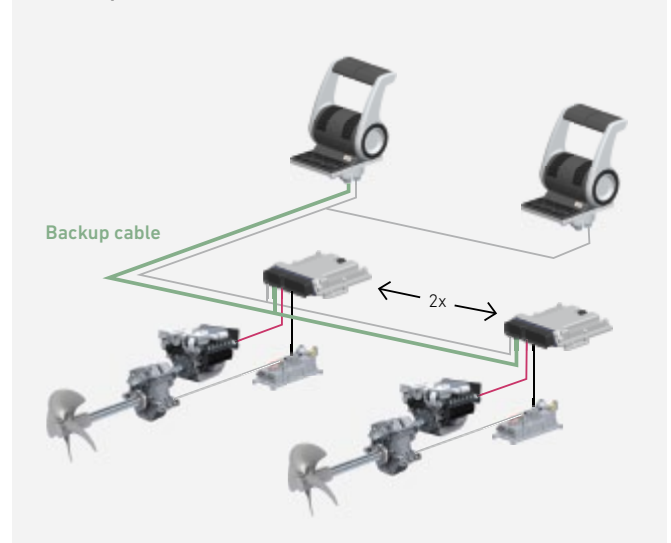
Marex ECS enhanced

The enhanced system features a separate backup Hall sensor which makes it even more reliable and safe. The control of the boat will be maintained, even if CAN communication is interrupted. In this version, each main propulsion is equipped with its own Marex ECS control – ensuring top-fail performance and system availability.

Additional functions exceeding basic version

- Backup Hall sensor
- One control per propulsion
- Gear feedback monitoring
- Trolling gearbox control

Backup Hall sensor



AVENTICS GmbH

Product Area Marine
Ulmer Straße 4
30880 Laatzen, Germany
Tel +49 511 2136-251
www.marex-shipcontrols.com
marinesales@aventics.com



Your Contact:

Further contacts:
www.aventics.com/contact

The data specified only serve to describe the product. No statements concerning a certain condition or suitability for a certain application can be derived from our information. The information given does not release the user from the obligation of own judgment and verification. It must be remembered that our products are subject to a natural process of wear and aging.

