

Marine Commercial Worldwide



Main- / Auxilliary Generating sets
Capacity: 70 kW – 2500 kW

Emergency Generating sets
Capacity: 70 kW – 2500 kW

Harbour Generating sets
Capacity: 70 kW – 2500 kW

Containerized
Generating sets



1. Auxiliary Generating Sets – Rating



Rating		Dimension LxWxH	Weight	Engine type
50Hz	60Hz			
<u>Powered by John Deere engines</u>				
82 kWe	101 kWe	1750x1000x1500 mm	1350 kg	4045 AFM85
129 kWe	153 kWe	2200x1000x1500 mm	1700 kg	6068 AFM85
155 kWe	179 kWe	2300x1000x1500 mm	1800 kg	6068 SFM85
204 kWe	256 kWe	2400x1000x1500 mm	2400 kg	6090 SFM75
307 kWe	383 kWe	2800x1100x1500 mm	2800 kg	6135 SFM85

Powered by Scania engines

188 kWe	188 kWe	2400x1100x1500 mm	2350 kg	DI09 074M
200 kWe	200 kWe	2450x1100x1500 mm	2400 kg	DI09 074M
250 kWe	250 kWe	2500x1100x1500 mm	2550 kg	DI09 074M
250 kWe	300 kWe	2600x1100x1500 mm	2600 kg	DI09 074M
300 kWe	350 kWe	2800x1100x1500 mm	2850 kg	DI13 074/075M
345 kWe	400 kWe	2850x1100x1500 mm	3050 kg	DI13 074/075M
400 kWe	400 kWe	2900x1100x1500 mm	3100 kg	DI13 074/075M
404 kWe	440 kWe	2800x1400x1500 mm	4050 kg	DI16 074/075M
423 kWe	480 kWe	2850x1400x1500 mm	4200 kg	DI16 074/075M
450 kWe	520 kWe	2900x1400x1500 mm	4600 kg	DI16 074/075M
480 kWe	560 kWe	2950x1400x1500 mm	4700 kg	DI16 074/075M
500 kWe	610 kWe	3000x1400x1500 mm	4850 kg	DI16 090M

marine@lindenberg-anlagen.de

Tel.: +49 2204 48103 155
Fax.: +49 2204 48103 164

Rating		Dimension LxWxH	Weight	Engine type
50Hz	60Hz			
<u>Powered by MAN engines</u>				
420 kWe	485 kWe	3000x1350x1500 mm	3750 kg	D 2840 LE301
500 kWe	590 kWe	3200x1350x1500 mm	4150 kg	D 2842 LE301
570 kWe	665 kWe	3300x1450x1500 mm	4900 kg	D 2862 LE322
665 kWe	760 kWe	3350x1450x1500 mm	5250 kg	D 2862 LE321

Powered by Baudouin engines

333 kWe	346 kWe	3150x1210x1500 mm	3500 kg	6M 26.2
416 kWe	436 kWe	3250x1210x1500 mm	3650 kg	6M 26.2
400 kWe	464 kWe	2900x1600x1500 mm	3800 kg	8M 26.2
675 kWe	700 kWe	3800x1700x1700 mm	6200 kg	12M 26.2
835 kWe	870 kWe	4200x1700x1700 mm	6500 kg	12M 26.2

Powered by Mitsubishi engines

670 kWe	785 kWe	3500x1600x1900 mm	7300 kg	S12A2-MPTAW
1060 kWe	1200 kWe	5100x1600x2200 mm	10500 kg	S12R-MPTAW
1425 kWe	1600 kWe	5300x1600x2200 mm	12000 kg	S16R-MPTAW
1860 kWe	-	5400x1650x2200 mm	14000 kg	S16R2-MPTAW

Powered by MTU engines

-	880 kWe	5100x1950x2600 mm	8000 kg	16V 2000 P82
1250 kWe	1500 kWe	5150x1950x2650 mm	11500 kg	12V 4000 P63/83
1650 kWe	1950 kWe	5400x1950x2650 mm	14000 kg	16V 4000 P63/83
2250 kWe	2500 kWe	8000x2300x3000 mm	20000 kg	20V 4000 P63/83

subject to change without notice

1. Auxiliary Generating Sets – Rating

2. Emergency - Harbour Sets – Rating



Rating		Dimension LxWxH	Weight	Engine type
50Hz	60Hz			
<u>Powered by John Deere engines</u>				
95 kWe	128 kWe	2400x1000x1500 mm	1500 kg	6068 HF275
120 kWe	170 kWe	2500x1000x1500 mm	1600 kg	6068 HF279/275
250 kWe	285 kWe	2980x1440x2020 mm	2700 kg	6090 HFG86
<u>Powered by Scania engines</u>				
175 kWe	175 kWe	2500x1100x1800 mm	2750 kg	DI09 074M
195 kWe	195 kWe	2550x1100x1800 mm	2800 kg	DI09 074M
240 kWe	240 kWe	2600x1100x1800 mm	2850 kg	DI09 074M
240 kWe	290 kWe	2650x1100x1800 mm	2950 kg	DI09 074M
290 kWe	335 kWe	3300x1350x1800 mm	3450 kg	DI13 075M
335 kWe	385 kWe	3350x1350x1800 mm	3600 kg	DI13 075M
385 kWe	385 kWe	3400x1350x1800 mm	3700 kg	DI13 075M

marine@lindenberg-anlagen.de

Tel.: +49 2204 48103 155

Fax.: +49 2204 48103 164

Rating		Dimension LxWxH	Weight	Engine type
50Hz	60Hz			
<u>Powered by MAN engines</u>				
410 kWe	465 kWe	3500x1360x1650 mm	4300 kg	D 2840 LE201
500 kWe	575 kWe	3850x1360x1700 mm	4700 kg	D 2842 LE201
<u>Powered by Mitsubishi engines</u>				
670 kWe	785 kWe	4200x2600x3100 mm	7800 kg	S12A2-MPT
1060 kWe	1200 kWe	5800x3100x3100 mm	11200 kg	S12R-MPT
1425 kWe	1600 kWe	6200x3500x3100 mm	12800 kg	S16R-MPT
1860 kWe	-	6300x3500x3200 mm	14800 kg	S16R2
<u>Powered by Mitsubishi engines</u>				
670 kWe	785 kWe	3500x1600x1900 mm	7300 kg	S12A2-MPTAW
1060 kWe	1200 kWe	5100x1600x2200 mm	10500 kg	S12R-MPTAW
1425 kWe	1600 kWe	5300x1600x2200 mm	12000 kg	S16R-MPTAW
1860 kWe	-	5400x1650x2200 mm	14000 kg	S16R2-MPTAW
<u>Powered by MTU engines</u>				
540 kWe	660 kWe	4450x2100x2650 mm	6600 kg	16V 2000 P62*/82
730 kWe	910 kWe	5100x2450x3150 mm	8500 kg	16V 2000 P62*/82
1260 kWe	1530 kWe	6350x3800x2750 mm	13600 kg	12V 4000 P61*/81*
1500 kWe	1600 kWe	6400x3800x2750 mm	13800 kg	12V 4000 P63/83
1680 kWe	2020 kWe	6600x3800x2750 mm	15300 kg	16V 4000 P61*/81*
2000 kWe	2150 kWe	6650x3800x2750 mm	15500 kg	16V 4000 P63/83
2500 kWe	2690 kWe	8500x3800x3600 mm	21200 kg	20V 4000 P63/83

*Only for Emergency application, IMO Tier II certificate are not available for this engine.

subject to change without notice

2. Emergency - Harbour Sets – Rating

3. Lindenberg Marine Generating Sets

LINDENBERG-ANLAGEN GmbH Marine Generating Sets comply to the rules of the major Classification Societies.



Control- & Electrical cabinets Made by Lindenberg-Anlagen GmbH with German High Quality cabling.

marine@lindenberg-anlagen.de

Tel.: +49 2204 48103 155

Fax.: +49 2204 48103 164

All Gensets will be tested at LINDENBERG-ANLAGEN GmbH own Test Center in accordance with the Classification Societies testing rules. Testing can be done up to 4.000 kWe 50 / 60 Hz and with alternator voltage of up to 11 kV.



Gensets with LINDENBERG-ANLAGEN GmbH certified IMO Tier III Systems available.

Even incline test as per e.g. NORSOK, are possible.



3. Lindenberg Marine Generating Sets

4. Marine Auxiliary Equipment



Exhaus Gas Silencer, many sizes on stock, with or without Spark Arrestor, DNV certified. Stainless Steel or Carbon Steel. Design & manufacturing by LINDENBERG-ANLAGEN GmbH.

Sound enclosures in standard ISO sizes or in customized dimensions; mild steel or stainless steel. Design & manufacturing by LINDENBERG-ANLAGEN GmbH.



DNV certified Marine Machinery Container. Mild steel or stainless steel. Design & manufacturing by LINDENBERG-ANLAGEN GmbH.

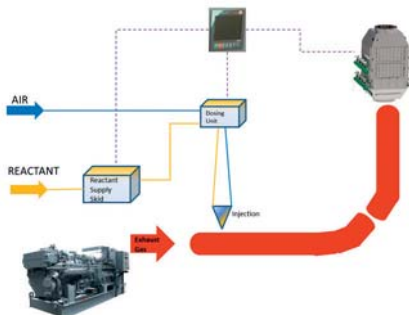
marine@lindenberg-anlagen.de

Tel.: +49 2204 48103 155
Fax.: +49 2204 48103 164



Monitoring System MEC24 specially designed for control & supervision of Diesel engines at marine use for emergency, harbour and auxiliary operation. The system integrates all necessary input and output channels, with supervision and control functionalities as required by marine classification societies.

Complete SCR-Systems, designed and manufactured by LINDENBERG-ANLAGEN GmbH, class certified for selected Gensets ready available. Others on request.



4. Marine Auxiliary Equipment

5. Spare Parts & Worldwide Service



spares@lindenberg-anlagen.de

Tel.: +49 2204 48103 205

Fax.: +49 2204 48103 234

SPARE PARTS from Lindenberg-Anlagen GmbH

Quick
Reliable
In-time
Genuine Parts

We deliver worldwide by land, ship and/or air freight if required. We constantly have spare parts on stock or have direct access to our partners spare parts inventory.

For spare parts please contact us @:

Phone : +49 2204 48103 205

Fax : +49 2204 48103 234

E-Mail : spares@lindenberg-anlagen.de

For service please contact us @:

Phone : +49 2204 48103 154

Fax : +49 2204 48103 234

E-Mail : service@lindenberg-anlagen.de

5. Spare Parts & Worldwide Service

6. Marine References

For Yachts, Commercial ships, Navy vessels as well as special Offshore projects.

**LINDENBERG-ANLAGEN GmbH built more than
6.200 Marine Generating Sets for total
1.850.000 kWe Power generation.**



Standard Auxiliary Generating Set with John Deere 6068SFM engine built for passenger ship.

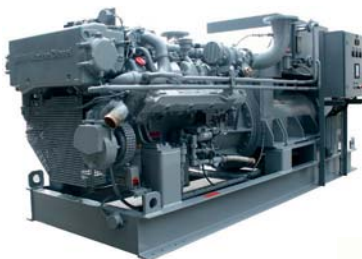
Standard Emergency Generating Set with MAN D2840LE201 engine built for RoRo Cargo ship.



marine@lindenberg-anlagen.de

Tel.: +49 2204 48103 155

Fax.: +49 2204 48103 164



420 kW Auxiliary Generating Set with MAN D2840LE301 engine and water cooled alternator, shock proofed designed for Navy ships.

850 kW containerized generating set with MTU 12V4000P61 engine for Offshore Platform.



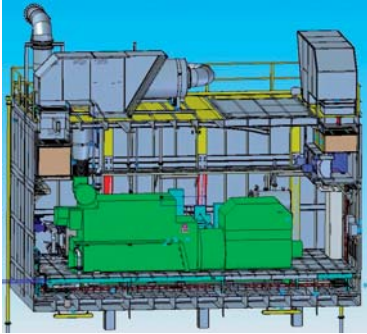
Marine Generating Set inside weather proofed canopy for installation on upper deck.

6. Marine References

7. Marine References (special design projects)

Canopy, built by Lindenberg for housing of 2.000 kW Diesel Generating Set, mounted on upper deck of FSO.

Classification: ABS
Dimension of the canopy: 11m x 6,5m x 10,1m (l x w x h)
150 tons gross weight

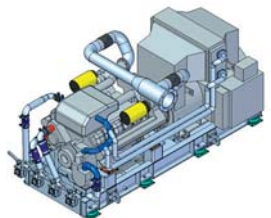
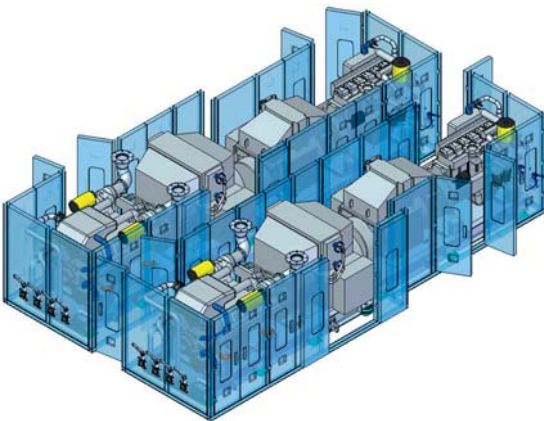


marine@lindenberg-anlagen.de

Tel.: +49 2204 48103 155
Fax.: +49 2204 48103 164

2 x 420kW + 2 x 320kW Marine Diesel Generating Sets with:

- Customized room design
- Installation in soundproof canopies
- Each canopy equipped with 2 generating sets
- Double elastic installation to eliminate vibrations
- Design, manufacturing and installation by Lindenberg



7. Marine References (special design projects)

Our offices and workshop facilities are located in Overath, Germany, which is located closed to Cologne.



Lindenberg-Anlagen GmbH
Agencies and Servicepoints

Contact:

- Marine: marine@lindenberg-anlagen.de
- Power: power@lindenberg-anlagen.de
- Direct: direct@lindenberg-anlagen.de
- CHP: bhkw@lindenberg-anlagen.de
- Components: components@lindenberg-anlagen.de
- Parts: spares@lindenberg-anlagen.de
- Service: service@lindenberg-anlagen.de



Lindenberg-Anlagen GmbH

Hoffnungsthaler Straße 41

51491 Overath

Tel.: +49 (0) 2204 48 103-0

Fax: +49 (0) 2204 48 103-109

Mail: postmaster@lindenberg-anlagen.de

Web: www.lindenberg-anlagen.de

*Technology & Experience
since 1948*

